



THE NATURAL  
OASIS



# WHO WE ARE

For over 40 years, Juhayna has been a trusted leader in the dairy and juice industry, delivering premium, nutritious products to consumers around the world. With a legacy of quality, innovation, and customer satisfaction, we've built a brand that stands for excellence. Our commitment to sustainable practices and high standards has allowed us to grow and thrive, making us a household name in both the dairy and juice sectors.

In 2008, we expanded our expertise into agriculture, launching Enmaa for agricultural development and livestock, focused on cultivating and exporting the finest crops. By combining traditional farming techniques with cutting-edge technology, we ensure that our fresh produce meets the highest quality standards. Today, we proudly supply fresh, premium citrus fruits to international markets, continuing our tradition of providing exceptional products to our customers.





**Employees +4000**

In the fields of agriculture, dairy and juice production



**10,000 Acres**

Cultivated with variable citrus produce applied for the most ecologically advanced and environmentally friendly agriculture



**7000+ Milking Cows**

7000+ Milking Cows



**5 Factories**

Apply the highest quality methods to produce



**1 MW**

Solar power Station to reduce carbon footprint



# VISION AND MISSION



MISSION



VISION

## Vision

To be Egypt's leading global exporter of premium fresh produce, renowned for quality, sustainability, & innovation.

## Mission

Deliver exceptional fresh produce to international markets, ensuring quality and sustainability while fostering innovation & growth.



# AGRICULTURE FARMS

Today, **Enmaa** is growing into a full-fledged agricultural entity that produces highest quality citrus and crops for both local and international markets, stretching on a landbank exceeding **10,000 acres** and aiming to expand exponentially within the coming two years , our farms are located at loamy soil

of **Al Farafra** and **Al Bahariya oasis**. **Enmaa** is now ready to be a leading grower in the fresh produce sector as our lands offer a variety of high-quality standard crops.



# LIVESTOCK FARM





On 600 acres we have our livestock farm with total herd now 7,500 heads reaching a total herd of 14,000 by the year 2027, in parallel with reclaiming 2000 acres annually to have enough ground to raise our cattle for milk production.



# SUSTAINABILITY



## SUSTAINABLE DEVELOPMENT GOALS

As the fresh produce industry continues to evolve, with increasing demand for organic, free pesticide and sustainable produce, ENMAA invests in sustainable cultivation practices and innovative digital marketing strategies to engage directly with consumers.

**Irrigation and soil control system,** we have an online satellite live irrigation, soil and disease control. this fully automated system gives us immediate data for irrigation and water optimum utilization for our crops, illustrating our strong strategy and role for the environmental sustainability for controlling water footprint level.

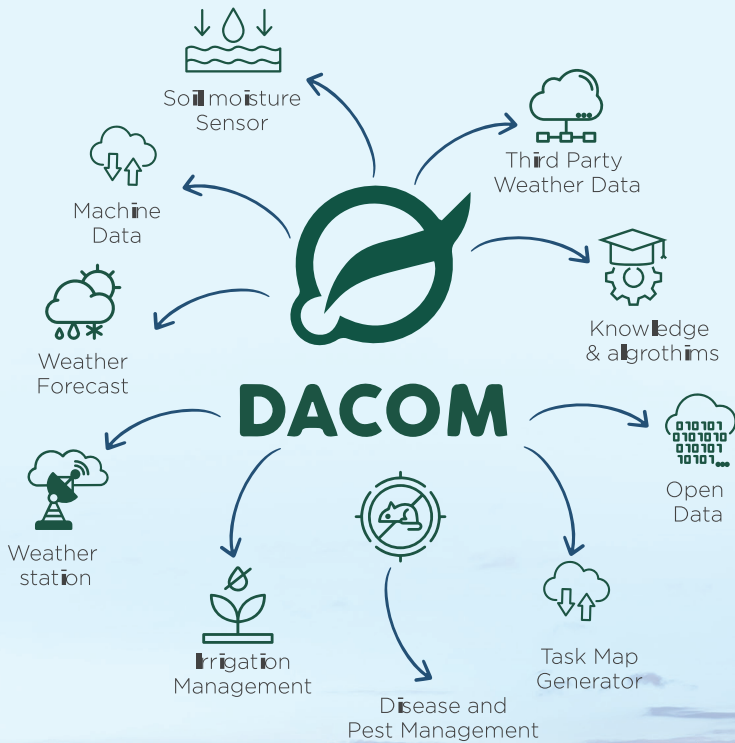
**Solar power station** One of the milestones in the company's history since its establishment is the opening of the first solar station selling electricity to the private sector from solar energy, with a capacity of 1 MW. The station is the first of its kind in Egypt, as it contributes to saving the consumption of about 600 thousand liters of diesel annually and avoiding the emission of about 1.62 thousand tons of carbon dioxide annually, noting that the entire project is run by solar energy to preserve the environment illustrating our strong strategy and role for the environmental sustainability.





# FARM MANAGEMENT

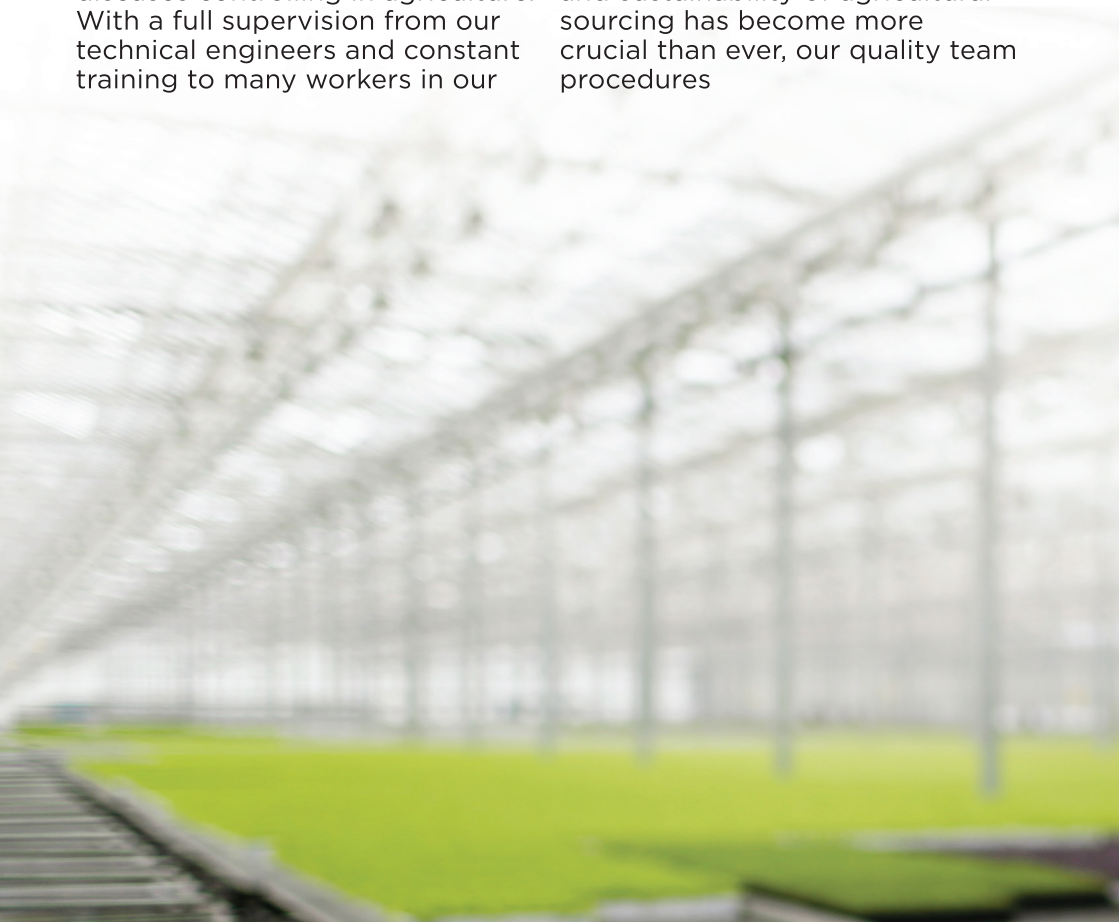
## DACOM SOFTWARE SYSTEM



# FARM HYGIENE AND QUALITY STANDARDS,

Keeping the technical and industrial background in our minds, we apply the latest and most comprehensive cultivation and harvest technologies, irrigation systems and systematic diseases controlling in agriculture. With a full supervision from our technical engineers and constant training to many workers in our

farms, we make sure that every piece of fruit is reaped with the best technique and by the most qualified expertise, in today's rapidly evolving food processing industry, ensuring the safety and sustainability of agricultural sourcing has become more crucial than ever, our quality team procedures





# FARM QUALITY PROCEDURES

## To produce a free pesticide Citrus

- 1-Regular monitoring and testing of soil and water quality to ensure optimum growth conditions.
- 2-Implementing Integrated Pest Management (IPM) practices to minimize the use of pesticides and prevent pest infestations.
- 3-Strict adherence to food safety protocols and hygiene practices during harvesting, transportation, and processing.
- 4-Traceability and Quality checks and controls at every stage of the supply chain
- 5-Detect and eliminate potential contaminants or deviations from the set standards.
- 6-Establishing traceability systems to track the origin and journey of agricultural products, facilitating swift recalls if necessary
- 7-Enhancing food safety measures is vital in agricultural sourcing to safeguard consumer health.
- 8-Implementing sustainable farming practices promotes environmental responsibility and long-term viability.



# FARM CERTIFICATES







WE ARE A MEMBER in



# CROPS SUMMARY







# CROPS CALENDAR

JAN.	FEB.	MARCH	APRIL	MAY	JUNE
 <p>MANDARINE</p>  <p>NAVEL ORANGE</p>  <p>BALADI ORANGE</p>	 <p>MANDARINE</p>  <p>VALENCIA ORANGE</p>  <p>NAVEL ORANGE</p>	 <p>MANDARINE</p>  <p>VALENCIA ORANGE</p>  <p>NAVEL ORANGE</p>	 <p>MANDARINE</p>  <p>VALENCIA ORANGE</p>	 <p>MANDARINE</p>  <p>VALENCIA ORANGE</p>	No citrus in this month
No citrus in this month	No citrus in this month	 <p>LEMON EUREKA</p>	 <p>LEMON EUREKA</p>	 <p>MANDARINE</p>  <p>LEMON EUREKA</p>	 <p>MANDARINE</p>  <p>BALADI ORANGE</p>  <p>LEMON EUREKA</p>





# Baladi

## ORANGE







# Baladi ORANGE

Are small to medium sized seedy fruits with the same taste as Valencia oranges, they are easy to squeeze, deep orange in color and full of juice.





## Specs

- **ORIGIN**

Product Of Egypt

- **SIZES**

56/46/72/80/88  
/100/113/125

- **COLOR**

100% Natural

- **GRADE**

Class A

- **SEASON**

From Dec : Jan

- **WAXED & TREATED**

T.B.Z & O.P.P

## Packing & Packaging

### 15KG TSCP



Each pallet takes 80 cartons on the standard type and the 40ft container takes 1664-1600 cartons with total N.W 24 MT.

This type of carton takes all orange sizes. Besides that, Egyptian Oranges can be stored for up to six months. Additionally, our branded carton dimensions are 27\*40\*30.

### 15KG OPEN-TOP



Each pallet takes 65 cartons on the standard type and the 40ft container takes 1300 cartons with Total N.W 19,5 MT.

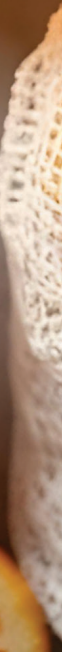
This type of carton takes sizes of (36-40-48-56-64-72) The Oranges can be stored for up to six months. Additionally, our branded

### 600 KG BINS



Each pallet takes 1 Bins  
Total Container Takes 40 Bins  
Suitable for juice factories.

VALENCIA  
ORANGE







# VALENCIA ORANGE

The Valencia orange, a fruit known primarily for its orange juice and processing also be used in raw or cooked applications. The juice can be used for marinades, syrups, vinaigrettes, cocktails, custards, or to flavor sauces for cooked meat dishes. As a result of its excellent taste and internal color, it is also a top choice for fresh fruit markets .





## Specs

- **ORIGIN**

Product Of Egypt

- **SIZES**

36/40/48/56/64  
/72/80/88/100

- **COLOR**

100% Natural

- **GRADE**

Class A

- **SEASON**

From Feb : May

- **WAXED & TREATED**

T.B.Z & O.P.P

## Packing & Packaging

### 15KG TSCP



Each pallet takes 80 cartons on the standard type and the 40ft container takes 1664-1600 cartons with total N.W 24 MT. This type of carton takes

all orange sizes. Besides that, Egyptian Oranges can be stored for up to six months. Additionally, our branded carton dimensions are 27\*40\*30.

### 15KG OPEN-TOP



Each pallet takes 65 cartons on the standard type and the 40ft container takes 1300 cartons with Total N.W 19,5 MT. This type of carton takes sizes of (-56-48-40-36 72-64)

The Oranges can be stored for up to six months. Additionally, our branded carton dimensions are 40x60x16.5

### 600 KG BINS



Each pallet takes 1 Bins  
Total Container Takes 40 Bins  
Suitable for juice factories.



# NAVEL ORANGE







# NAVEL ORANGE

Navel oranges are mainly an eating fruit because they are seedless and their thicker skin makes them easy to peel, this is one of the most eaten orange varieties, it is sweet, seedless, and is delicious in salads.





## Specs

- **ORIGIN**

Product Of Egypt

- **SIZES**

36/40/48/56/64  
/72/80/88/100

- **COLOR**

100% Natural

- **GRADE**

Class A

- **SEASON**

From Dec : March

- **WAXED & TREATED**

T.B.Z & O.P.P

## Packing & Packaging

### 15KG TSCP



Each pallet takes 80 cartons on standard type and the 40ft container takes 1664-1600 cartons. This type of carton takes all orange sizes.

The Oranges can be stored for up to six months. Additionally, our branded carton dimensions are 27\*40\*30.

### 15KG OPEN-TOP



Each pallet takes 65 cartons on standard type and the 40ft container takes 1300 cartons. This type of carton takes sizes of : (-56-48-40-36 72-64)

The Oranges can be stored for up to six months. Additionally, our branded carton dimensions are 40x60x16.5.



MANDARINS







# MANDARINS

Mandarin oranges are citrus fruits in the same family as oranges, lemons, limes, and grapefruit. Compared to the common orange, mandarin oranges are smaller, sweeter, and easier to peel.

## Specs

- **ORIGIN**  
Product Of Egypt
- **SIZES**  
46/72/80/88/100/113
- **Murcott:**  
36/42/48/64/72/80/88
- **COLOR**  
100% Natural
- **GRADE**  
Class A
- **SEASON**  
Fremont: Nov : Mar  
Murcott: Feb: May
- **WAXED & TREATED**

## Packing & Packaging

### 10 KG OPEN-TOP CARTON BOX



Total No. of wooden Pallets Container

21 Pallet: (20 Chip Pallet + 1 Euro Pallet)

No. of Carton boxes per Chip Pallet

100 Carton Per Pallet

No. of Carton boxes per Euro Pallet

80 Carton Per Pallet

Total Carton boxes per Container

2,080 Cartons

Carton box net weight (Kg)	10
Carton box Gross/weight (Kg)	10.5
Total Net weight/Container (Kg)	20,800
Total Gross weigh/Container (Kg)	21,840
Carton box dimensions (cm)	30*40*22 cm

## Optium Temperature

Up to 5 Months if 3.89- 2.22 °C. - Up to 3 Months at 7.11 °C.



## 8.5KG PLASTIC-BOX



**Total No. of wooden Pallets Container**

**21 Pallet: (20 Chip Pallet + 1 Euro Pallet)**

No. of Plastic boxes per Chip Pallet

120 Box Per Pallet

**Total Carton boxes per Container**

**2,400 Cartons**

Plastic box net weight (Kg)

8,5

Plastic box Gross weight (Kg)

9

Total Net weight/Container (Kg)

20,400

Total Gross weigh/Container (Kg)

21,600

### Optium Temperature

Up to 5 Months if 3.89- 2.22 °C. - Up to 3 Months at 7.11 °C.

## 15KG OPEN-TOP



**Total No. of wooden Pallets/Container**

**21 Pallet: (20 Chip Pallet + 1 Euro Pallet)**

No. of Plastic boxes per Chip Pallet

70 Box Per Pallet

**Total Carton boxes per Container**

**1,400 Cartons**

Plastic box net weight (Kg)

15

Plastic box Gross/weight (Kg)

16

Total Net weight/Container (Kg)

21,000

Total Gross weigh/Container (Kg)

22,400

### Optium Temperature

Up to 5 Months if 3.89- 2.22 °C. - Up to 3 Months at 7.11 °C.



Adalia  
LEMON





# Adalia LEMON

Egyptian Lemons are high in vitamin C, fiber, and various beneficial plant compounds. These nutrients are responsible for several health benefits, such as wound healing and tissue development and repair, lemons also have a distinct, pleasant taste and smell that make them a great addition to food and drinks.





## Specs

- **ORIGIN**

Product Of Egypt

- **SIZES**

72/80/88/100  
/113/125/138/150

- **COLOR**

100% Natural

- **GRADE**

Class A

- **SEASON**

From Sept : Dec

- **WAXED & TREATED**

T.B.Z & O.P.P

## Packing & Packaging

### 15KG TSCP



Each pallet takes 80 cartons on the standard type and the 40ft container takes 1664-1600 cartons with a total of 24 MT.

This type of carton takes all lemon sizes. Our Lemon can be stored for up to six months. Additionally, our branded carton dimensions are 27\*40\*30.

### 15KG PLASTIC

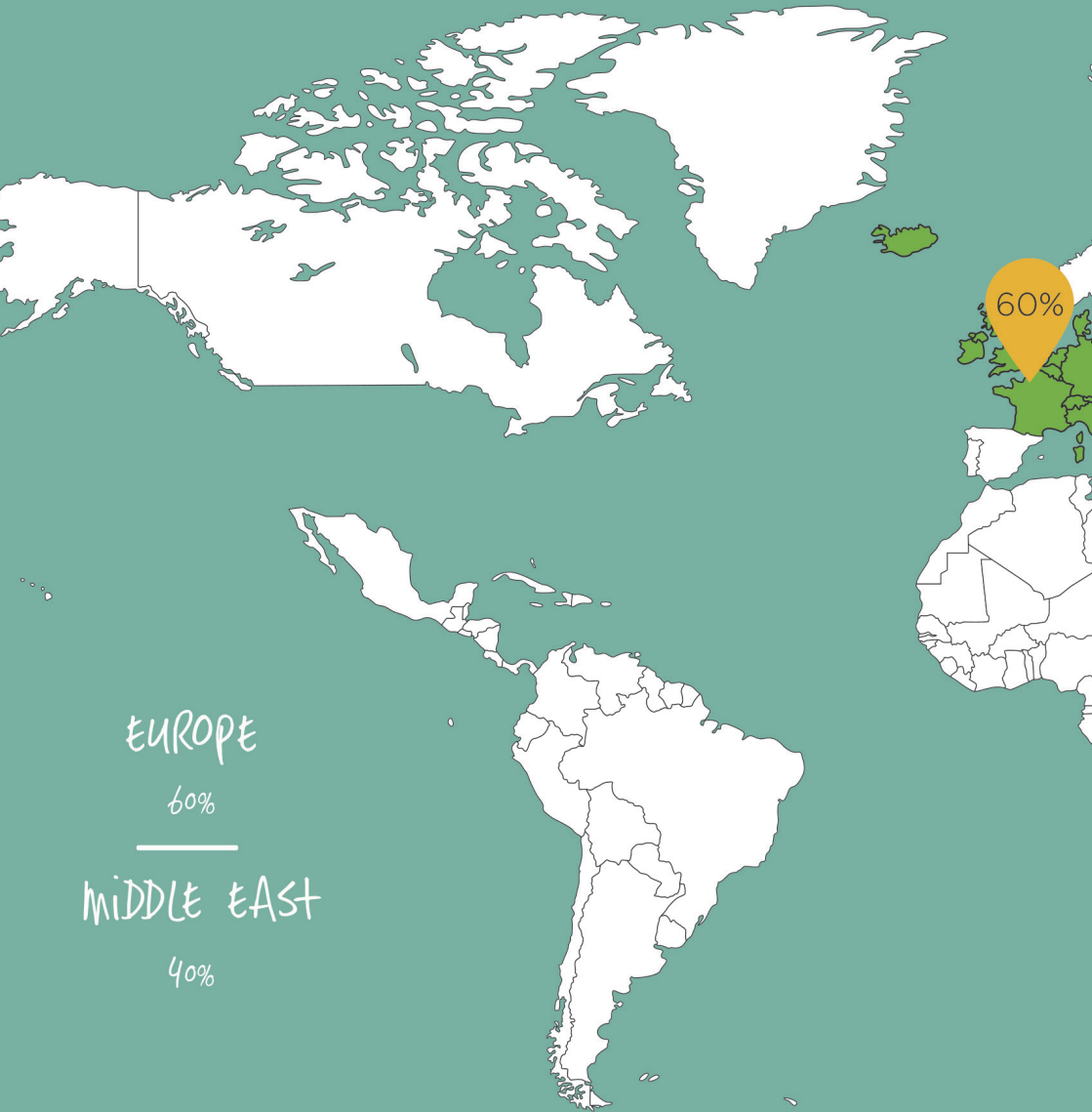


Each pallet takes 65 cartons on the standard type and the 40ft container takes 1300 cartons.

Our Lemon can be stored for up to six months. This type of carton takes sizes of (-56-48-40-36 72-64)

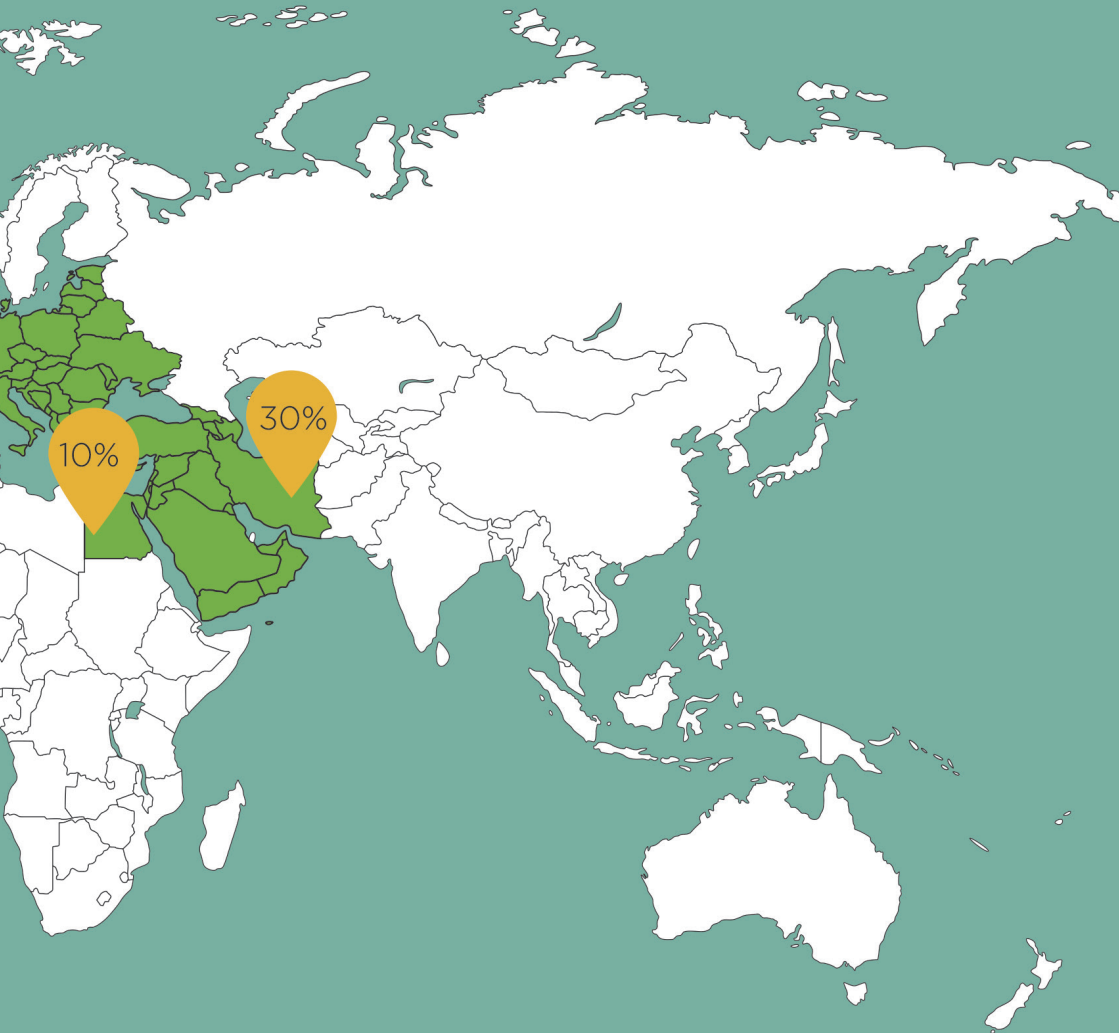


# WE EXPORT





# From Egypt to all countries of the world



# OUR TOP

orange customers

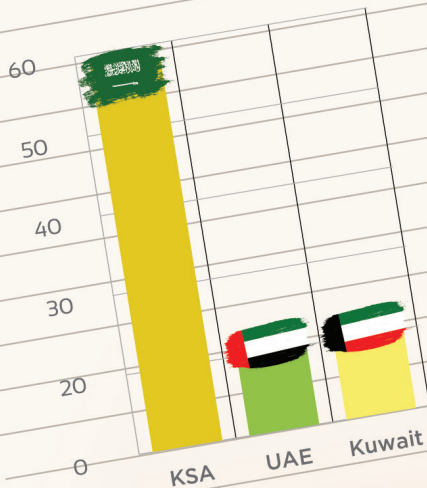






# OUR TOP

## Lemon customers










 [Enmaa.export@al-enmaa.com](mailto:Enmaa.export@al-enmaa.com)

 [www.enmaa.co](http://www.enmaa.co)

 Polygon, Building No.2,  
Beverly Hills,  
Sheikh Zayed- Giza -Egypt.